

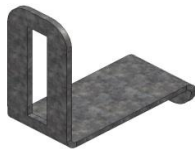
## TECHNICAL BULLETIN TB36 - R1

### Instruction UPDATE.

This appliance has a strengthened cage which significantly stiffens the door when attached. In a similar way as previously described in the instruction manual there is a hanger either already positioned on the front of the black cage or within the red bin. NOTE there are three sizes depending upon your model.



The hanger is then attached to either the stainless steel door or to a furniture door. If you have purchased a stainless steel door this will have inserts in the back of the door and the relevant screws so it can be attached. The height of the stainless door, relative to the top of the appliance can be set by moving the hanger up or down. In some stainless steel doors there are two small inserts that 2/3 towards the top of the door. These can be used with the door rigidity brackets either with the door or within the



red bin. One latter versions of the stainless steel door these inserts are not present so recycle the brackets in this instance.

If fitting to a furniture door please only use screws which are shorter than the depth of the furniture door to insure you do not damage the door.

Fitting to a furniture door

1. Place the hanger on the front of the cage so the two top hooks are securely in place.
2. Extend the cage out on its runners
3. Place the door up against the door at the correct height (there will be some room for adjustment later) and use the hole in the front of the cage and the hanger to mark the door with a pencil.
4. Remove the hanger and place on the door ensuring that the pencil mark aligns with the hole.
5. Screw the hanger to the door
6. Refit the door with the hanger to the cage and adjust slightly if required using the slots in the hanger
7. At the bottom of the hanger are two M6 bolts – use these to screw the hanger up into the cage to stop any movement between the door and the cage. Note that you can adjust the tilt on the door using the bolts within the slots.